



Paris, France 25 April, 2012

ESI is the pioneer and world-leading solution provider in virtual prototyping.

Market Data

Listed in compartment C of NYSE Euronext Paris

[ISIN FR 0004110310](#)

Contact

[ESI Group](#)

Céline Gallerne

T: +33 (0)1 41 73 58 46

Celine.Gallerne@esi-group.com

Visit our Press Room

www.esi-group.com/newsroom

Connect with ESI



ESI doubles revenues for its composites activity in 2011

A success further encouraged by a French state grant to strengthen its R&D activity in composites

Paris, France – 25 April, 2012 – [ESI Group](#), pioneer and world-leading solution provider in [virtual prototyping](#) for manufacturing industries, announces that its license and services revenue linked to Virtual Manufacturing & Performance of composites has doubled over the past 2 years and tripled over the past 3 years.

This success is the result of [ESI](#)'s continuous investment in Research & Development and the creation of a portfolio of software and services that successfully address the challenges of the manufacturing industries using composite materials. [ESI](#)'s [Composites Simulation Suite](#), including software tools [PAM-FORM](#) and [PAM-RTM](#), allows clients to fully plan & assess the manufacturing processes of their composite parts, while [Virtual Performance Solution](#) can predict the 'in use' performances of these parts.

Another contributing factor to this success is the deployment of [ESI](#)'s expertise across the globe:

- in Asia and in Russia, where the booming aeronautic sector requires innovative composite solutions;
- in Germany, where [ESI](#) provides expert knowledge in light-weight materials to the automotive sector;
- in Europe and South America, in support of the rapid advances in wind energy.

Ever since the opening of its dedicated R&D center near Bordeaux, the company has confirmed its commitment to strengthening its knowledge in composite materials by engaging in key partnerships with universities and industry players. Recently, [ESI](#)'s partnership with the University of Nottingham has resulted in the addition of a permeability database to [ESI](#)'s [Composites Simulation Suite](#), allowing users to benefit from years of research in the field.

"We have worked with ESI on flow simulation, forming simulation and impact modelling for many years, and consider their software to be at the leading edge of composites analysis. During that time we have developed materials characterization techniques to determine necessary input data, in particular reinforcement permeability for resin flow simulation. We are very pleased to be able to provide some of our data for other users – as well as providing useful data for analysis of composites manufacturing. We hope that this will promote further collaboration amongst the composites manufacturing



community,” declares **Professor Andrew Long**, Dean of the Faculty of Engineering, University of Nottingham.

Other key partnerships include a close collaboration with Universities of Dresden and IFB Stuttgart in Germany, the PPE (Pôle de Plasturgie de l’Est), Dassault Systèmes, and Chinese government’s aircraft consortium AVIC. To sustain its leading edge position in composites, ESI has also engaged in several French, German and European projects including MAAXIMUS, LYCOS, HIVOCOMP, INFUCOMP, LCM-SMART, RAID-OUTIL, MAI-composites or MAPPIC3D.

Recently announced funding from the French local government further encourages the company’s research activity. Last month, the Aquitaine region allocated 250 000 € to support [ESI](#)’s R&D center near Bordeaux. The center is located close to the “Aerospace Valley”, one of the world’s most important aeronautics R&D bases, where industry leaders such as Airbus, Dassault Aviation or EADS-Astrium are present.

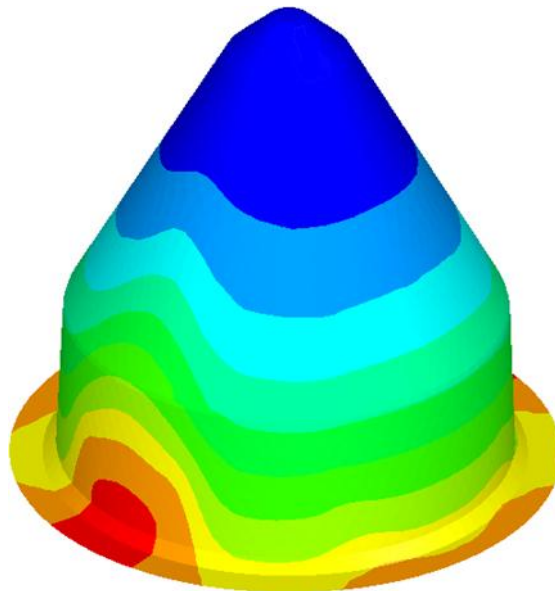


Image : Nose cone, showing the effect of reinforcement forming on resin flow, using ESI’s Composites Simulation Suite.

Courtesy of Professor Andrew Long, University of Nottingham

For more ESI news, visit: www.esi-group.com/newsroom

About ESI Group

[ESI](#) is a pioneer and world-leading solution provider in virtual prototyping for manufacturing industries that takes into account the physics of materials. [ESI](#) has developed an extensive suite of coherent, industry-oriented applications to realistically simulate a product’s behavior during testing, to fine-tune manufacturing processes in accordance with desired product performance, and to evaluate the environment’s impact on performance. [ESI](#)’s solutions fit into a single collaborative and open environment for End-to-End Virtual Prototyping, thus eliminating the need for physical prototypes during product development. The company employs about 900 high-level specialists worldwide covering more than 30 countries. [ESI Group](#) is listed in compartment C of NYSE Euronext Paris. For further information, visit www.esi-group.com.

Connect with ESI on [Twitter](#), [Facebook](#), and [YouTube](#)



ESI Group – Media Relations

[Céline Gallerne](#)

T: +33 (0)1 41 73 58 46