



Paris, France – December 21, 2010

**ESI** is the pioneer and world-leading solution provider in virtual prototyping.

#### Market Data

Listed in compartment C of NYSE Euronext Paris

[ISIN FR 0004110310](#)

#### Contacts

##### [ESI Group](#)

Stuart Aitken

T: +33 (0)1 41 73 58 46

[stuart.aitken@esi-group.com](mailto:stuart.aitken@esi-group.com)

Visit our Press Room  
[www.esi-group.com](http://www.esi-group.com)

#### Connect with ESI



## ESI Announces the Release of Visual-Environment 6.5

### An integrated and versatile virtual prototyping platform for improved productivity

**Visual-Environment** offers a flexible and open engineering framework within a common platform for applications and interfaces, addressing simulation domains simultaneously or on a stand-alone basis. With two releases scheduled every year, **ESI** customers benefit from an ever-evolving platform adapted to the needs of various disciplines, solvers and industries.

Along with an optimized workspace, **Visual-Environment 6.5** includes general performance enhancements and notable updates to existing applications, all aimed at increasing productivity and efficiency. Examples include, a generic and consistent entity selection procedure to improve usability within the selection wizard, as well as optimal layer management in the **Visual-Viewer** application, which enables the study of multiple models in one window. In addition to managing enterprise workflows and simulation content within **VisualDSS** and its web client, customers will also benefit from this Decision Support System (DSS) for complete design lifecycle management.

#### Interface with various disciplines

Every application in **ESI's Visual-Environment** is updated with each new release. For instance, **Visual-Crash** PAM 6.5 features a new Belt Tool to create a multi-point seat belt in just a few clicks and a new plot editor to visualize and edit curves, supporting the crash and safety simulation solver **PAM-CRASH**.

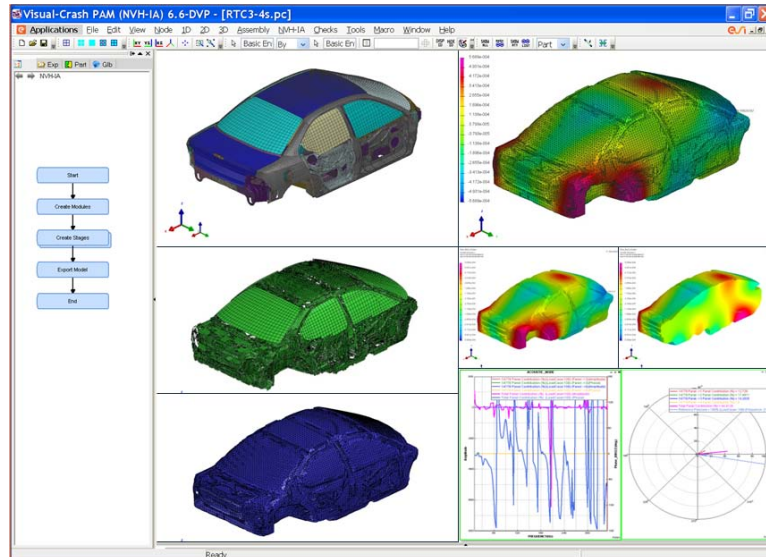


This latest release of [Visual-Environment](#) also incorporates three new applications: [Visual-CEM](#) for computational electromagnetic (CEM) simulations, [Visual-Composite Materials](#) for composite structure manufacturing and [Visual-Weld](#) for welding and heat treatment simulations. While [Visual-CEM](#) includes a harness manager to handle all types of cable networks, from simple lines to sophisticated bundles, [Visual-Composite Materials](#) now allows the management of material data related to shape distortion simulations. As for [Visual-WELD](#), visualization is improved thanks to the creation of weld sequence animations. The automatic creation of reports and weld lines is also available in version 6.5.

### **Support for NVH & Interior Acoustics**

In a special release, [Visual-Environment](#) 6.6 is being simultaneously made available with version 6.5 for selected ESI customers. In version 6.6 the setup of Noise, Vibration and Harshness (NVH) simulations ranging from Structural Transfer Functions and Point Mobility Analysis to full Vehicle Interior Acoustics with road excitation, is possible. The 6.6 edition provides advanced tools to visualize acoustic coupling, create structural panels, as well as process automation for setting up NVH and Interior Acoustics models. ESI's [Visual-Environment](#) platform not only covers the complete sequence typically used in automotive NVH simulation, but also extends to the integration of Porous Elastic Materials (PEM) for improved predictability of the sound pressure level experienced by drivers and passengers.

*“Our new NVH and Interior Acoustics module allows customers to improve their productivity by reusing data already available from other domains like Crash, Strength and Stiffness. Furthermore, the physical realism and accuracy of the NVH solution can be enhanced by bringing in the effects of the manufacturing and assembly history on the mechanical properties of the parts and assemblies,”* said **Willem Van Hal**, NVH Product Manager at ESI Group.



*NVH-Interior Acoustics module in Visual-Environment*

*“Our customers are our coaches and their constant feedback has been instrumental in guiding us forward,”* said **Anitha Nanjundaswamy Rao**, Platform Product Manager at ESI Group. *“With this latest release of Visual-Environment, ESI comes closer to delivering to its customers an integrated platform for End-to-End Virtual Prototyping.”*

For more information, please visit: [www.esi-group.com/visual-environment](http://www.esi-group.com/visual-environment)

For more ESI news, visit: [www.esi-group.com/newsroom](http://www.esi-group.com/newsroom)

#### **About ESI Group**

**ESI** is a pioneer and world-leading solution provider in virtual prototyping that takes into account the physics of materials. **ESI** has developed an extensive suite of coherent, industry-oriented applications to realistically simulate a product’s behavior during testing, to fine-tune manufacturing processes in accordance with desired product performance, and to evaluate the environment’s impact on performance. **ESI**’s solutions fit into a single collaborative and open environment for End-to-End Virtual Prototyping, thus eliminating the need for physical prototypes during product development. The company employs over 750 high-level specialists worldwide covering more than 30 countries. **ESI Group** is listed in compartment C of NYSE Euronext Paris. For further information, visit [www.esi-group.com](http://www.esi-group.com).